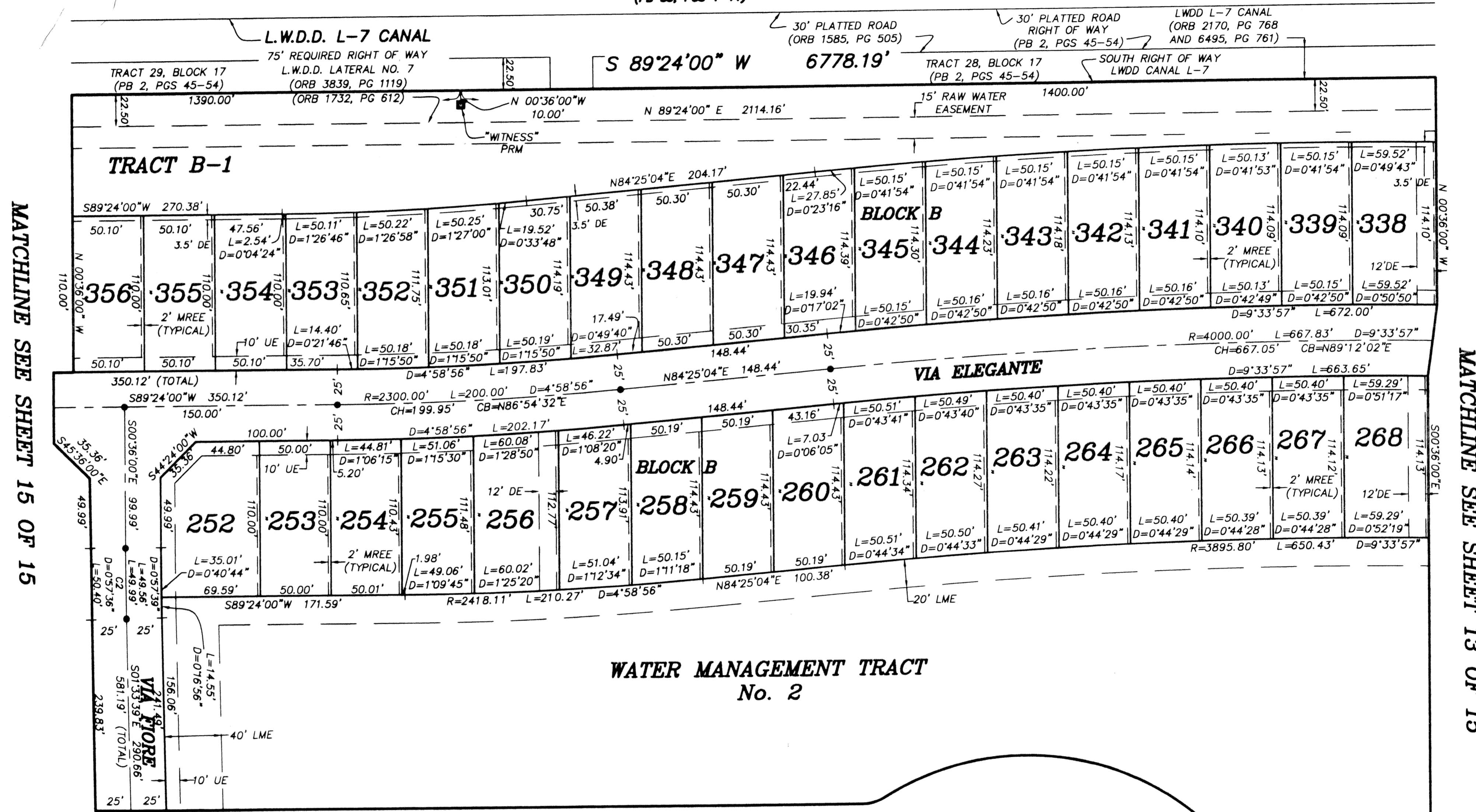


BUENA VIDA
 BEING A REPLAT OF A PORTION OF BLOCKS 16 AND 17 OF PALM BEACH FARMS COMPANY
 PLAT No. 3, AS RECORDED IN PLAT BOOK 2, PAGES 45 THROUGH 54 OF THE PUBLIC
 RECORDS OF PALM BEACH COUNTY, FLORIDA, IN PART OF SECTIONS 7 AND 8, TOWNSHIP
 44 SOUTH, RANGE 42 EAST, VILLAGE OF WELLINGTON, PALM BEACH COUNTY, FLORIDA.
 SHEET 14 OF 15
 MARCH 2002

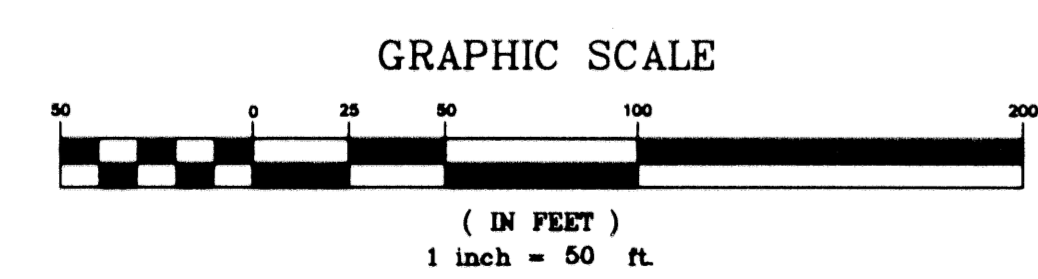
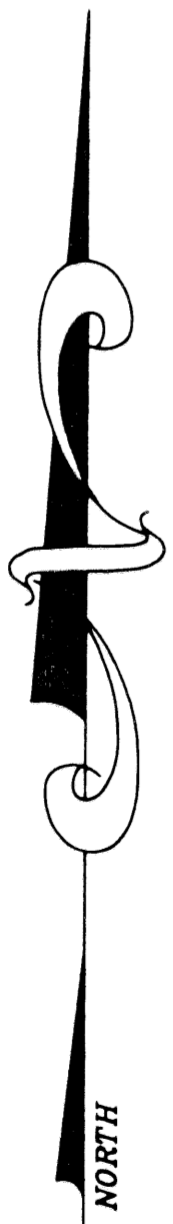
STONEHAVEN, P.U.D.
 (PB 88, PGS 1-11)



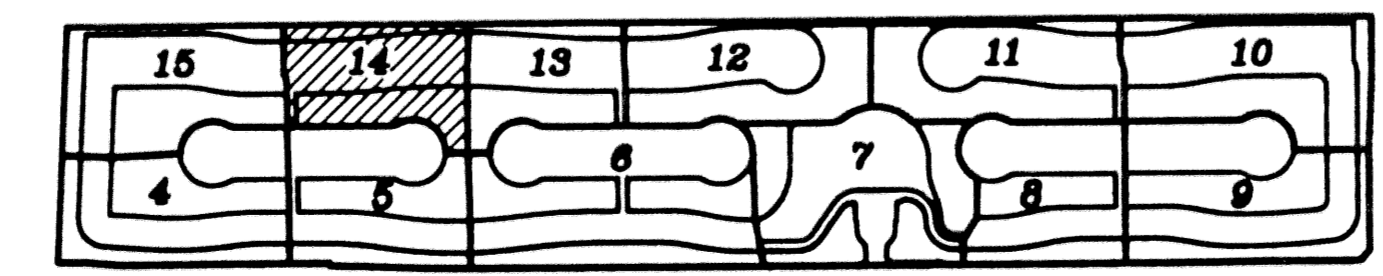
MATCHLINE SEE SHEET 15 OF 15

MATCHLINE SEE SHEET 13 OF 15

MATCHLINE SEE SHEET 5 OF 15



CURVE TABLE					
CURVE	DELTA	LENGTH	RADIUS	CHORD BEARING	CHORD DISTANCE
C2	0°57'40"	49.99'	2980.00'	S01°04'50"E	49.98'



- LEGEND:**
- D= DELTA (CENTRAL ANGLE)
 - L= LENGTH
 - R= RADIUS
 - PB= PLAT BOOK
 - O.R.B.= OFFICIAL RECORD BOOK
 - PG= PAGE
 - = PERMANENT REFERENCE MONUMENT "LB 4318" (UNLESS OTHERWISE NOTED)
 - = PERMANENT CONTROL POINT "LB 4318"
 - (R)= RADIAL
 - UE= UTILITY EASEMENT
 - DE= DRAINAGE EASEMENT
 - MREE= MAINTAINANCE & ROOF EAVE EASEMENT
 - LME= LAKE MAINTAINANCE EASEMENT
 - LAE= LIMITED ACCESS EASEMENT
 - WMT= WATER MANAGEMENT TRACT
 - PLS= PROFESSIONAL LAND SURVEYOR
 - PSM= PROFESSIONAL SURVEYOR & MAPPER
 - LB= LICENSED SURVEYING & MAPPING BUSINESS
 - CH= CHORD DISTANCE
 - CB= CHORD BEARING
 - LWDD= LAKE WORTH DRAINAGE DISTRICT
 - PBC= PALM BEACH COUNTY
 - PDE= PUBLIC DRAINAGE EASEMENT

BUENA VIDA	
NICK MILLER, INC. Surveying & Mapping Consultants	
	SHEET NO. <h1 align="center">14</h1>
SUITE 105 2580 RCA BLVD. PALM BEACH GARDENS, FLORIDA 33410 TEL 561 627-5200 FAX 561 627-0983 D.B.P.R. LICENSED BUSINESS No. 4318	SCALE: 1" = 50' DATE: MARCH 2002 JOB NO. 1008.009 FILE: 1008.09